

DOP-XT-036

1. Unique identification code of the product-type:

Single Wall Metal System Chimney
EN 1856-1:2009

2. Type, batch or serial number or any other element allowing identification of the construction product as required under Article 11(4):

DINAK XT

1.0 Model 1.4404 / 316L	Ø 80-300	T200 H1 W V2 L50040 O40
1.0 Model 1.4404 / 316L	Ø 350-450	T200 H1 W V2 L50050 O60
1.0 Model 1.4404 / 316L	Ø 500-600	T200 H1 W V2 L50060 O80
1.0 Model 1.4404 / 316L	Ø650-1000	T200 H1 W V2 L50080 O160
2.0 Model 1.4521 / 444	Ø 80-300	T200 H1 W V2 L50040 O40
2.0 Model 1.4521 / 444	Ø 350-450	T200 H1 W V2 L50050 O60
2.0 Model 1.4521 / 444	Ø 500-600	T200 H1 W V2 L50060 O80
2.0 Model 1.4521 / 444	Ø650-1000	T200 H1 W V2 L50080 O160
3.0 Model 1.4162 / S32101	Ø 80-300	T200 H1 W V2 L50040 O40
3.0 Model 1.4162 / S32101	Ø 350-450	T200 H1 W V2 L50050 O60
3.0 Model 1.4162 / S32101	Ø 500-600	T200 H1 W V2 L50060 O80
3.0 Model 1.4162 / S32101	Ø650-1000	T200 H1 W V2 L50080 O160
4.0 Model 1.4301 / 304	Ø 80-300	T200 H1 W Vm L50040 O40
4.0 Model 1.4301 / 304	Ø 350-450	T200 H1 W Vm L50050 O60
4.0 Model 1.4301 / 304	Ø 500-600	T200 H1 W Vm L50060 O80
4.0 Model 1.4301 / 304	Ø650-1000	T200 H1 W Vm L50080 O160

3. Intended use or uses of the construction product, in accordance with the applicable harmonised technical specification, as foreseen by the manufacturer:

Convey the products of combustion from heating appliances to the outside atmosphere

4. Name, registered trade name or registered trade mark and contact address of the manufacturer as required under Article 11(5):

DINAK S.A.
Camiño do Laranxo, 19
36216, Vigo (SPAIN)
dinak@dinak.com

5. Where applicable, name and contact address of the authorised representative whose mandate covers the tasks specified in Article 12(2):

Not applicable

6. System or systems of assessment and verification of constancy of performance of the construction product as set out in CPR, Annex V:

System 2+
System 4 (for terminals)

7. Notified factory production control certification body TÜV SÜD Industrie Service GmbH, No.0036, performed the initial inspection of the manufacturing plant and of factory production control and the continuous surveillance, assessment and evaluation of factory production control and issued the certificate of conformity of the factory production control

8. Declared performance

Essential Characteristics	Performance	Harmonized technical specification
Compressive strength Chimney Sections, fittings and supports	Up to 46 m (See annex) See annex	EN 1856-1:2009
Resistance to fire	Models 1.0, 2.0 and 4.0: Ø80-300: T200 – O40 Ø350-450: T200 – O60 Ø500-600: T200 – O80 Ø650-100: T200 – O160	EN 1856-1:2009
Gas tightness/leakage	Models 1.0, 2.0, 3.0 and 4.0: H1	EN 1856-1:2009
Flow resistance of chimney sections, fittings and terminals	According to EN 13384-1	EN 1856-1:2009
Thermal resistance	0 m ² K/W tested at 200°C	EN 1856-1:2009
Thermal shock resistance Soot fire resistance	Models 1.0, 2.0, 3.0 and 4.0: No	EN 1856-1:2009
Thermal performance under normal operating conditions	Models 1.0, 2.0, 3.0 and 4.0: T200	
Flexural tensile strength (only for means of connection for chimney sections and fittings)	Up to 88 m (see annex)	EN 1856-1:2009
Non vertical installation	Maximum offset between supports: 3 m at 90° (see annex)	EN 1856-1:2009
Components subject to wind load	Maximum free standing height: 3 m above last support (see annex) Maximum spacing between lateral supports: 4 m (see annex)	EN 1856-1:2009
Durability Water and vapour diffusion resistance	Models 1.0, 2.0, 3.0 and 4.0: Yes	EN 1856-1:2009
Condensate penetration resistance	Models 1.0, 2.0, 3.0 and 4.0: Yes	
Against corrosion	Model 1.0: V2 Model 2.0: V2 Model 3.0: V2 Model 4.0: Vm	
Freeze thaw resistance	Yes	EN 1856-1:2009

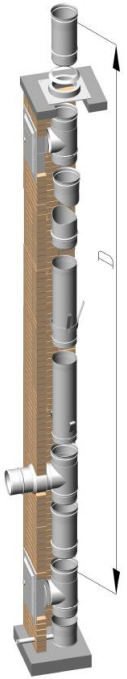
9. The performance of the product identified in points 1 and 2 is in conformity with the declared performance in point 8.

This declaration of performance is issued under the sole responsibility of the manufacturer identified in point 4. Signed for and on behalf of the manufacturer by:

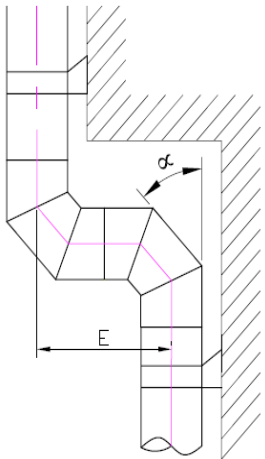
Íñigo A. Canoa (General Manager)

Vigo, 6th June 2013

DOP-XT-036

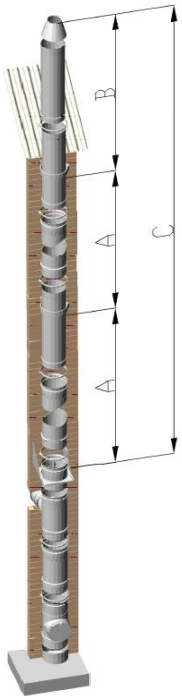


	COMPRESSION STRENGTH		TENSION STRENGTH	
	Material	MAX. LOAD – Size D (m)	Material	MAX. LOAD
ND (mm)	125	1.4301 / 304; 1.4404 / 316L; 1.4521 / 444; 1.4162 / S32101	46	88
	150		39	74
	175		33	63
	200		29	55
	250		23	44
	300		19	37
	350		17	55
	400		15	48
	450		13	43
	500		10	32
	550		9	29
	600		8	26
	650		9	18
	700		9	17
	750		8	16
	800		7	15
	850		7	14
	900		7	13
950		7	12	
1000		7	12	

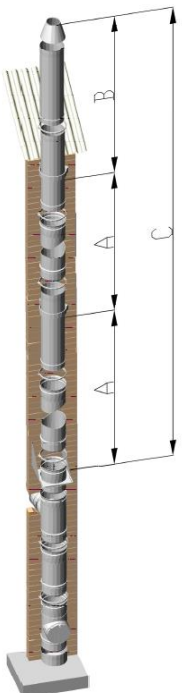


	NON VERTICAL INSTALLATION		
	Material	Maximum deflection α (°)	Maximum length of the slope – Size E (m)
ND (mm)	125	1.4301 / 304; 1.4404 / 316L; 1.4521 / 444; 1.4162 / S32101	3
	150		3
	175		3
	200		3
	250		3
	300		3
	350		3
	400		3
	450		3
	500		3
	550		3
	600		3
	650		3
	700		3
	750		3
	800		3
	850		3
	900		3
950		3	
1000		3	

DOP-XT-036

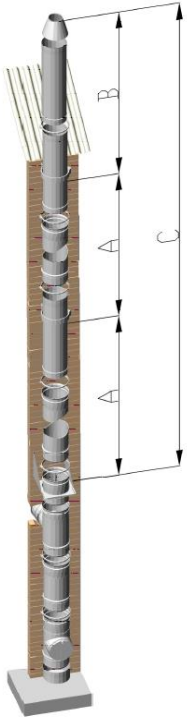


WIND LOAD RESISTANCE				
CONFIGURATION 1: FLAT WALL SUPPORT 086 / SELF-STANDING SUPPORT 861				
	Max. Number of straight elements (020) between supports (Size A)	Max. Length from last support (m) (Size B)		
Material	1.4301 / 304; 1.4404 / 316L 1.4521 / 444; 1.4162 / S32101	AISI 304 / 1.4401	1.4404 / 316L 1.4521 / 444; 1.4162 / S32101	
ND (mm)	125-175	X		
	200	4	3	2.5
	230	4	3	2.5
	250	4	3	2.5
	280	4	3	2.5
	300	4	3	2.5
	350	4	3	2.5
	400	4	3	2.5
	450	4	3	2.5
	500	4	3	2.5
	550	4	3	2.5
	600	4	3	2.5
	650	3	X	
	700	3		
	750	3		
	800	3		
	850	3		
900	3			
950	2			
1000	2			



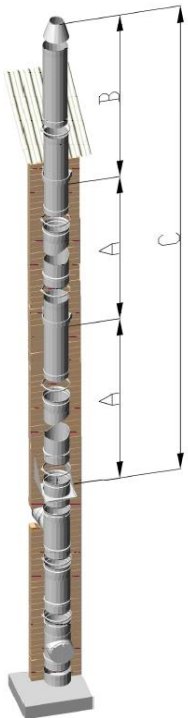
CONFIGURATION 2: FLAT WALL SUPPORT 086			
	Max. Number of straight elements (020) between supports (Size A)	Max. Length from last support (m) (Size B)	
Material	1.4301 / 304; 1.4404 / 316L; 1.4521 / 444; 1.4162 / S32101		
ND (mm)	125	4	1.5
	150	4	1.5
	175	4	1.5
	200	4	1.5
	250	4	1.5
	300	4	1.5
	350	4	1.5
	400	4	1.5
	450	4	1.5
	500	4	1.5
	550	4	1.5
	600	4	1.5
	650	3	1.5
	700	3	1.5
	750	3	1.5
	800	3	1.5
	850	3	1.5
	900	3	1.5
	950	2	1.5
	1000	2	1.5

DOP-XT-036

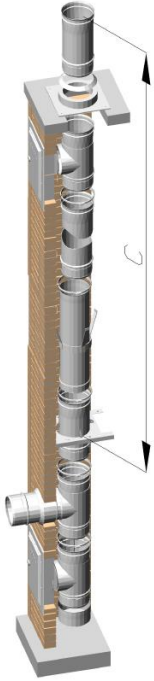


CONFIGURATION 3: FLAT ADJUSTABLE SUPPORTS 831		
Distance to wall (831) : 70-120 mm		
	Max. Number of straight elements (020) between supports (Size A)	Max. Length from last support (m) (Size B)
Material	1.4301 / 304; 1.4404 / 316L; 1.4521 / 444; 1.4162 / S32101	
125	3	1.5
150	3	1.5
175	3	1.5
200	3	1.5
250	3	1.5
300	3	1.5
350	3	1.5
400	3	1
450	3	1
500-1000	X	

CONFIRGURATION 4: FLAT CUTTABLE SUPPORTS 836		
Distance to wall (836) : 100-250 mm		
	Max. Number of straight elements (020) between supports (Size A)	Max. Length from last support (m) (Size B)
Material	1.4301 / 304; 1.4404 / 316L; 1.4521 / 444; 1.4162 / S32101	
125	3	1.5
150	3	1.5
175	3	1.5
200	3	1.5
250	3	1.5
300	3	1.5
350	3	1.5
400	3	1.5
450	3	1.5
500	3	1.5
550	3	1.5
600	3	1.5
650-1000	X	



CONFIGURATION 5: FLAT LONG CUTTABLE SUPPORTS 846		
Distance to wall (846) : 250-430 mm		
	Max. Number of straight elements (020) between supports (Size A)	Max. Length from last support (m) (Size B)
Material	1.4301 / 304; 1.4404 / 316L; 1.4521 / 444; 1.4162 / S32101	
125	2	1.5
150	2	1.5
175	2	1.5
200	2	1.5
250	2	1.5
300	2	1.5
350	2	1.5
400	2	1.5
450	2	1.5
500	2	1.5
550	2	1.5
600	2	1.5
650-1000	X	



COMPRESSION STRENGTH OF THE SUPPORT			
MAX. LOAD (m)			
Modelo	Adjustable base support closed 853 Size (C)	Adjustable base support extended 853 Size (C)	Adjustable floor support 856
125	241	130	126
150	201	108	105
175	172	92	90
200	151	81	78
250	120	65	63
300	100	54	52
350	84	58	56
400	74	51	49
450	66	45	44
500	49	34	33
550	45	30	30
600	41	28	27
650-1000	X	X	X