

DOP-SW-020

1. Unique identification code of the product-type:

Metal Flue Liner
EN 1856-2:2009

2. Type, batch or serial number or any other element allowing identification of the construction product as required under Article 11(4):

DINAK SW

1.0 Model 1.4404 / 316L	Ø 80-300	T200 P1 W V2 L50040 O
1.0 Model 1.4404 / 316L	Ø 350-450	T200 P1 W V2 L50050 O
1.0 Model 1.4404 / 316L	Ø 500-600	T200 P1 W V2 L50060 O
1.0 Model 1.4404 / 316L	Ø 650-800	T200 P1 W V2 L50080 O
1.1 Model 1.4404 / 316L	Ø 80-300	T600 N1 W V2 L50040 G
1.1 Model 1.4404 / 316L	Ø 350-450	T600 N1 W V2 L50050 G
1.1 Model 1.4404 / 316L	Ø 500-600	T600 N1 W V2 L50060 G
1.1 Model 1.4404 / 316L	Ø 650-800	T600N1 W V2 L50080 G
2.0 Model 1.4521 / 444	Ø 80-300	T200 P1 W V2 L99040 O
2.0 Model 1.4521 / 444	Ø 350-450	T200 P1 W V2 L99050 O
2.0 Model 1.4521 / 444	Ø 500-600	T200 P1 W V2 L99060 O
2.0 Model 1.4521 / 444	Ø 650-800	T200 P1 W V2 L99080 O
2.1 Model 1.4521 / 444	Ø 80-300	T600 N1 W V2 L99040 G
2.1 Model 1.4521 / 444	Ø 350-450	T600 N1 W V2 L99050 G
2.1 Model 1.4521 / 444	Ø 500-600	T600 N1 W V2 L99060 G
2.1 Model 1.4521 / 444	Ø 650-800	T600 N1 W V2 L99080 G
3.0 Model 1.4162 / S32101	Ø 80-600	T200 P1 W V2 L99050 O
3.0 Model 1.4162 / S32101	Ø 650-800	T200 P1 W V2 L99080 O
4.0 Model 1.4301 / 304	Ø 80-300	T200 P1 W Vm L20040 O
4.0 Model 1.4301 / 304	Ø 350-450	T200 P1 W Vm L20050 O
4.0 Model 1.4301 / 304	Ø 500-600	T200 P1 W Vm L20060 O
4.0 Model 1.4301 / 304	Ø 650-800	T200 P1 W Vm L20080 O
4.1 Model 1.4301 / 304	Ø 80-300	T600 N1 W Vm L20040 G
4.1 Model 1.4301 / 304	Ø 350-450	T600 N1 W Vm L20050 G
4.1 Model 1.4301 / 304	Ø 500-600	T600 N1 W Vm L20060 G
4.1 Model 1.4301 / 304	Ø 650-800	T600 N1 W Vm L20080 G

3. Intended use or uses of the construction product, in accordance with the applicable harmonised technical specification, as foreseen by the manufacturer:

Convey the products of combustion from heating appliances to the outside atmosphere

4. Name, registered trade name or registered trade mark and contact address of the manufacturer as required under Article 11(5):

DINAK S.A.
Camiño do Laranxo, 19
36216, Vigo (SPAIN)
dinak@dinak.com

5. Where applicable, name and contact address of the authorised representative whose mandate covers the tasks specified in Article 12(2):

Not applicable

DOP-SW-020

6. System or systems of assessment and verification of constancy of performance of the construction product as set out in CPR, Annex V:

System 2+

7. Notified factory production control certification body TÜV SÜD Industrie Service GmbH, No.0036, performed the initial inspection of the manufacturing plant and of factory production control and the continuous surveillance, assessment and evaluation of factory production control and issued the certificate of conformity of the factory production control

8. Declared performance

Essential Characteristics	Performance	Harmonized technical specification
Compressive strength Chimney Sections, fittings and supports	Up to 72 m (See annex) See annex	EN 1856-2:2009
Flexural tensile strength (only for means of connection for chimney sections and fittings)	Up to 138 m (see annex)	EN 1856-2:2009
Non vertical installation	Maximum offset between supports: 3 m at 90° (see annex)	EN 1856-2:2009
Resistance to fire	Models 1.0, 2.0, 3.0 and 4.0: T200 – O Models 1.1, 2.1 and 4.1 T600 – G	EN 1856-2:2009
Gas tightness/leakage	Models 1.0, 2.0, 3.0 and 4.0: N1	EN 1856-2:2009
Flow resistance of chimney sections, fittings and terminals	According to EN 13384-1	EN 1856-2:2009
Thermal shock resistance Soot fire resistance	Models 1.0, 2.0, 3.0 and 4.0: No Models 1.1, 2.1 and 4.1: Yes	EN 1856-2:2009
Thermal performance under normal operating conditions	Models 1.0, 2.0, 3.0 and 4.0: T200 Models 1.1, 2.1 and 4.1: T600	
Durability Water and vapour diffusion resistance	Models 1.0, 2.0, 3.0 and 4.0: Yes Models 1.1, 2.1, 4.1: Yes	EN 1856-2:2009
Condensate penetration resistance	Models 1.0, 2.0, 3.0 and 4.0: Yes Models 1.1, 2.1, 4.1: Yes	
Against corrosion	Model 1.0 and 1.1: V2 Model 2.0 and 2.1: V2 Model 3.0: V2 Model 4.0 and 4.1: Vm	
Freeze thaw resistance	Yes	EN 1856-2:2009

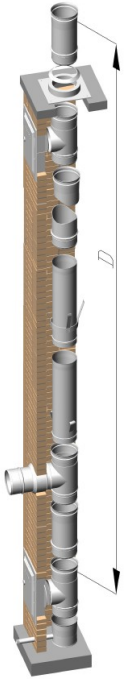
9. The performance of the product identified in points 1 and 2 is in conformity with the declared performance in point 8.

This declaration of performance is issued under the sole responsibility of the manufacturer identified in point 4. Signed for and on behalf of the manufacturer by:

Íñigo A. Canoa (General Manager)

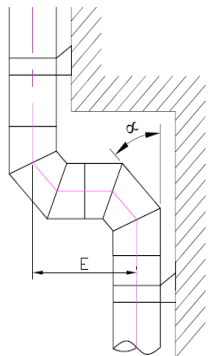
Vigo, 6th June 2013

DOP-SW-020



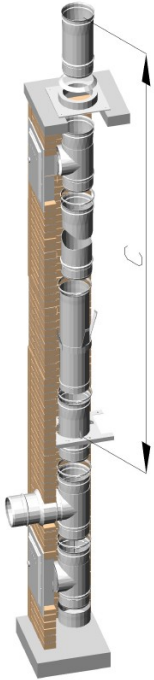
Material	COMPRESSIVE STRENGTH	TENSILE STRENGTH
	Height – Size D (m)	Height (m)
	AISI 304 / 1.4401 or AISI 316L / 1.4404	AISI 304 / 1.4401 or AISI 316L / 1.4404
80	72	138
83	70	133
97	60	114
100	58	111
110	53	101
111	52	100
120	48	92
125	46	88
130	45	85
139	42	79
140	41	79
150	39	74
153	38	72
160	36	69
167	35	66
175	33	63
180	32	61
200	29	55
230	25	48
250	23	44
280	20	39
300	19	37
350	17	55
400	15	48
450	13	43
500	10	32
550	9	29
600	8	26
650	9	18
700	9	17
750	8	16
800	7	15

* In case a higher resistance is required, check with Dinak the possibility of installing a reinforced Tee



Material	NON VERTICAL INSTALLATION	
	Maximum deflection α (°)	Maximum length of the slope – Size E (m)
	AISI 304 / 1.4401 or AISI 316L / 1.4404	
80	90	3
83	90	3
97	90	3
100	90	3
110	90	3
111	90	3
120	90	3
125	90	3
130	90	3
139	90	3
140	90	3
150	90	3
153	90	3
160	90	3
167	90	3
175	90	3
180	90	3
200	90	3
230	90	3
250	90	3
280	90	3
300	90	3
350	90	3
400	90	3
450	90	3
500	90	3
550	90	3
600	90	3
650	90	3
700	90	3
750	90	3
800	90	3

DOP-SW-020



COMPRESSIVE STRENGTH OF THE SUPPORT				
Height (m)				
Model	Adjustable base support closed 853 Size (C)	Adjustable base support extended 853 Size (C)	Adjustable floor support 856	Roof support 082
80	377	203	197	X
83	363	195	190	
97	311	167	162	
100	302	162	157	
110	274	147	143	
111	272	146	142	
120	251	135	131	
125	241	130	126	
130	232	125	121	
139	217	117	113	
140	215	116	112	
150	201	108	105	
153	197	106	103	
160	188	101	98	
167	180	97	94	87
175	172	92	90	87
180	167	90	87	81
200	151	81	78	79
230	131	70	68	76
250	120	65	63	73
280	107	58	56	69
300	100	54	52	67
350	84	58	56	61
400	74	51	49	53
450	66	45	44	48
500	49	34	33	43
550	45	30	30	40
600	41	28	27	X
650	28	19	19	
700	26	18	17	
750	24	17	16	
800	23	15	15	

ND (mm)