



DW5

Double-walled stainless steel modular duct, with 0.5 mm thick inner wall and 30 mm rock wool insulation and with optional seal

FIRE RESISTANCE CLASSIFICATION: EI180 ve-ho (o?i)

The DINAK DW range has been tested to EN 1366-13, specifically for chimney flues, and classified as "fire-resistant" according to the new EN13501-2-2023 standard

This solution prevents the spread of fire from outside to inside both vertically and horizontally

Benefits

Versatility

The DW5 range is suitable for a variety of applications and fuels, offering great flexibility in design and installation. The ideal solution for the evacuation of combustion gases from equipment such as boilers for heating and DHW production, condensing boilers (installation of seals required), stoves, inserts, pellet and wood boilers, boilers for industrial and commercial use, etc

Resistance and robustness

The design of the parts gives them reinforced mechanical resistance, guaranteeing a reduced thermal bridge

Safety-End Finish

All parts have a safety-end finish making it completely safe to handle the parts during assembly

Technical features

Generic

Overlap: 40 mm

Inner wall thickness 0.5 mm

Materials and thicknesses

Inner wall:

Stainless steel AISI 304 BA (1.4301) or AISI 316L BA (1.4404)

Stainless steel AISI 444 BA (1.4521)

Thickness:

0.5 mm from Ø80/140 to 300/360 mm

Outer wall:

Stainless steel AISI 304 BA (1.4301) or AISI 316L BA (1.4404)

Stainless steel AISI 441 BA (1.4509)

Galvanised steel (DX51D (1.0226) + Z275MB)

Thickness:

0.4 mm from Ø80/140 to 300/360 mm

Copper

Thickness:

0.5 mm from Ø80/140 to 300/360 mm

Optional painted (R.A.L. range)

Insulation:

30 mm rock wool 100 kg/m³ density

Temperature classes

Without seal: Up to 600°C (T600)

With seal: Up to 200°C (T200)

Sealing classes

Without seal: N1 (up to 40 Pa)

With seal: P1 (up to 200 Pa overpressure)

Diameters

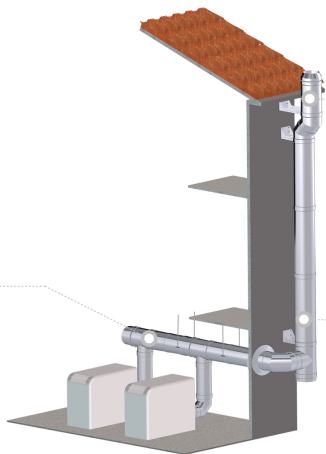
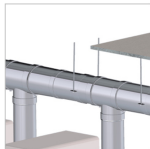
80/140	100/160	130/190
150/210	160/220	180/240
200/260	250/310	300/360

Certifications

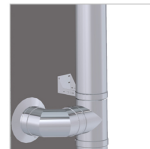


Assembly

Specific elbows and tees to ensure a minimum 3 degree slope on horizontal sections in condensing conditions.



Wide variety of terminals for different applications, always maintaining the aesthetics of the installation.



Large range of options to provide the best support for the chimney.

Do you want more information about **DW5**?

Contact us

uk@dinak.com

[\(+44\) 0121 272 4830](tel:+441212724830)