



EI120/240VENT+

The perfect solution for multi-sector fire compartmentation and smoke control applications

Double-wall stainless steel modular chimney with outer seal or sealing ring, and 100 mm low-density mineral wool insulation in between

FIRE RESISTANCE CLASSIFICATION: EI 60/60 to EI 240/120 ve-ho (i?o)

The EI EI120/240VENT+ range has been tested in accordance with the EN 1366-1 certification for ventilation ducts, and classified as “fire-resistant” according to EN 13501-3

Benefits

EI 120 Certification

It contains all the certifications required for the passage of fire compartmentation up to EI 240/120, being certified in interior and exterior fire conditions, both for vertical compartmentation passages, EI 120 ve (i?o) / EI 240 ve (o?i), and for horizontal sectorisation passages, EI 120 ho (i?o) / EI 240 ho (o?i)

Easy installation

The assembling system between parts facilitates their installation, speeding up times and guaranteeing gas tightness. Assembly without the need for press-fitting

CE Fire Smoke Control Marking

It is part of the specific fire resistance classification as Fire Smoke Control duct according to EN 1366-1 certification for ventilation ducts, and classified as “fire-resistant” according to EN 13501-3

Technical features

Generic

Guaranteed minimum fire resistance of 120 minutes

Overlap: 40 mm

Sealing of the joints between elements by means of external silicone seal (Ø80/280 to 500/700) or sealing ring sealed with neutral silicone resistant to high temperatures (Ø550/750 to 800/1000 mm)

No thermal bridging and individual absorption of internal wall expansion in each element without the need to install compensators and additional fixed points

Safety end of all parts for increased safety and mechanical strength

Removable

Temperature classes

With outer seal: up to 600 °C (T600)

With inner seal: up to 200 °C (T200)

Materials and thicknesses

Inner wall:

AISI 304 BA (1.4301) or AISI 316L BA (1.4404) stainless steel

Thickness:

0.4 mm from Ø80/280 to 600/800 mm

0.6 mm from Ø650/850 to 800/1000 mm

Outer wall:

AISI 304 BA (1.4301) or AISI 316L BA (1.4404) stainless steel

Thicknesses:

0.4 mm from Ø80/280 to 175/375 mm

0.5 mm from Ø200/400 to 450/650 mm

0,6 mm from Ø500/700 to 800/1000 mm

Stainless steel AISI 409L BA (1.4512) "consult Dinak"

Thicknesses:

0.4 mm from Ø80/280 to 175/375 mm

0.6 mm from Ø200/400 to 600/800 mm

Insulation:

Low density mineral wool insulation with a thickness of 100 mm

Sealing classes

With external seal: H1 (up to 5,000 Pa overpressure)

With internal seal, DN ? 600: P1 (up to 200 Pa overpressure)

With internal seal, DN > 650: N1 (up to 40 Pa overpressure)

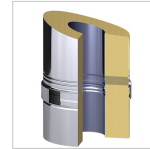
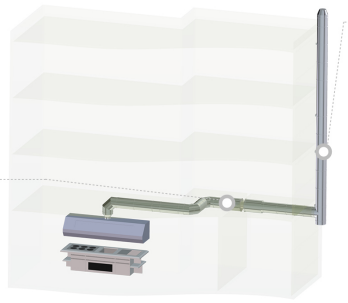
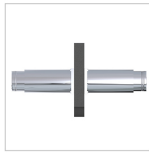
 **Diameters**

80/280	100/300	125/325
150/350	175/375	200/400
250/450	300/500	350/550
400/600	450/650	500/700
550/750	600/800	650/850
700/900	750/950	800/1.000

 **Certifications**


Assembly

The fire compartmentation passage must be carried out in the same way as in fire resistance tests to ensure, together with the duct, that the fire resistance of the penetrated element is maintained and not compromised. In the DINAK EI120+ range these are the sealing elements in their version for horizontal passages (SAG+SBH) as well as for vertical passages (SAG+SBV).



Optimal gas-tightness characteristics, as well as excellent stability, mechanical resistance and robustness thanks to its constructive design.

Do you want more information about **EI120/240VENT+**?

Contact us

uk@dinak.com

(+44) 0121 272 4830