



DW6

The ideal solution for the evacuation of combustion gases

Double-walled stainless steel modular chimney, with 0.6 mm thick inner wall and intermediate insulation of 30 mm rock wool with an optional T200 seal

FIRE RESISTANCE CLASSIFICATION: EI30 to EI180 ve-ho (o?i)

The DINAK DW5 range has been tested to EN 1366-13, specifically for chimney flues, and classified as "fire-resistant" according to the new EN 13501-2-2023 standard

This solution prevents the spread of fire from outside to inside both vertically and horizontally

Attention: The compartmentation elements (SAG, SBG) supplied by Dinak in the wall bushings are necessary to ensure fire classification

★ Benefits

Versatility

The DW6 range covers a wide range of applications and fuel types, giving great flexibility in design and installation. The ideal solution for the evacuation of combustion gases from: Boilers for heating and DHW production; Condensing boilers (requires the installation of the seals); Stoves, inserts, pellet and wood boilers; Boilers for industrial and commercial use; Steam boilers; Bakery and confectionery ovens and Air ducting, air ventilation

Safety-End Finish

All parts have a safety-end making it completely safe to handle the parts during assembly

Resistance and robustness

The design of the parts gives them reinforced mechanical resistance, also guaranteeing a reduced thermal bridge

Technical features

Generic

Overlap: 40 mm

Soot fire resistant

Bright stainless steel finish, or galvanised steel for internal installation

Temperature classes

Without seal: Up to 600°C (T600)

With seal: Up to 200°C (T200)

Diameters

| | | |
|---------|---------|---------|
| 80/140 | 100/160 | 130/190 |
| 150/210 | 160/220 | 180/240 |
| 200/260 | 250/310 | 300/360 |
| 350/410 | 400/460 | 450/510 |
| 500/560 | 550/610 | 600/660 |

Materials and thicknesses

Inner wall:

AISI 316L BA stainless steel (1.4404)

Thickness: 0.6 mm from Ø80/140 to 600/660 mm

Outer wall:

Stainless steel AISI 304 BA (1.4301) or AISI 316L BA (1.4404)

Stainless steel AISI 441 BA (1.4512)

Galvanised steel (DX51D (1.0226) + Z275MB)

Thickness: 0.4 mm from Ø80/140 to 300/360 mm

Copper (with a thickness of 0.5 mm from Ø350/410 to 600/660 mm)

Optional painted (R.A.L. range)

Insulation:

30 mm rock wool 100 kg/m³ density

Sealing classes

Without seal: N1 (up to 40 Pa)

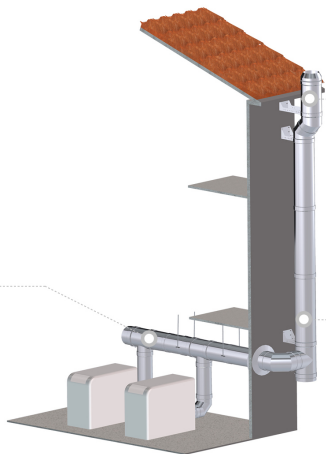
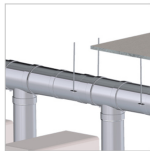
With seal: P1 (up to 200 Pa overpressure)

Certifications

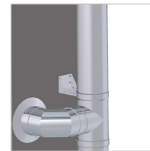


Assembly

Specific elbows and tees to ensure a minimum 3 degree slope on horizontal sections in condensing conditions.



Wide variety of terminals for different applications, always maintaining the aesthetics of the installation.



Large range of options to provide the best support for the chimney.

Do you want more information about **DW6**?

Contact us

sales@dinak.com

+34 986 45 25 26